

KNOW YOUR HELMET

ENGLISH

INSTRUCTIONS DEFENDER



EXTERIOR

OUTER SHELL IMPACT PROTECTION

TESTING POINTS

S
B
P
R
X



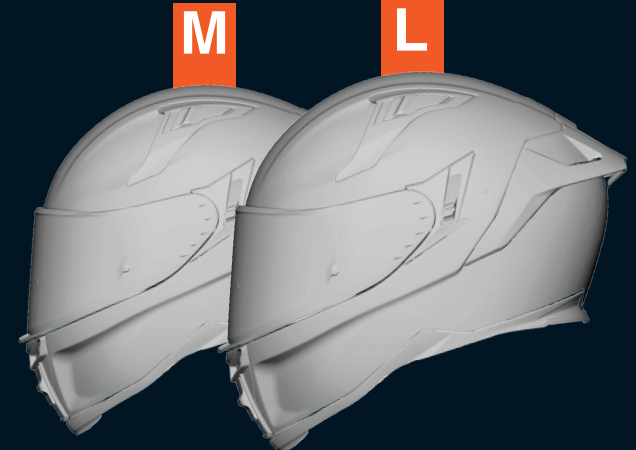
SRT

Shock Resistant Thermoplastic is a strong material known as PC/ABS which resists high impacts. The outer layer of the helmet is formed by the injection of molten plastic into a specially engineered mold to produce the strongest possible shell.

EPS

Expanded Polystyrene absorbs shocks from high impacts in order to reduce serious injuries.

2 SHELL SIZES



SHELL SIZES	
M	L
LINER SIZES	
XS / S / M / L	XL / XXL



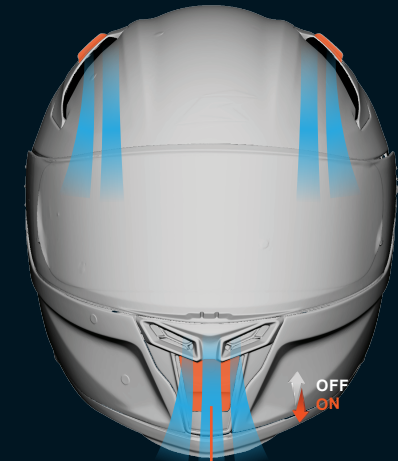
www.bilmola.com

VENTILATION

SIDE

The air flow from the side intake integrates with the top vent to maximise the natural, cooling air flow.

OFF ON



FRONT

When open, the front vent increases the flow of fresh, breathable air and reduces fogging.



EXHAUST

The exhaust efficiently draws out hot air from the inside of the helmet.

VISION SHIELD

VISOR

REMOVAL

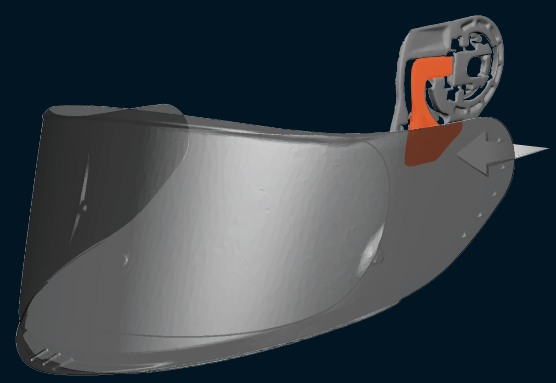
STEP 1

Open up visor.



STEP 2

Pull the latch down and lift the visor out from mechanism.

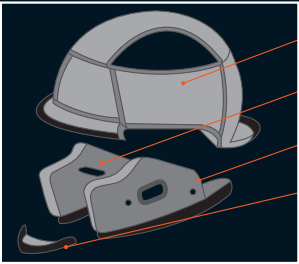


INTERIOR

REMOVABLE

LINER SET

ASSEMBLE



Crown padding

Right cheek pad

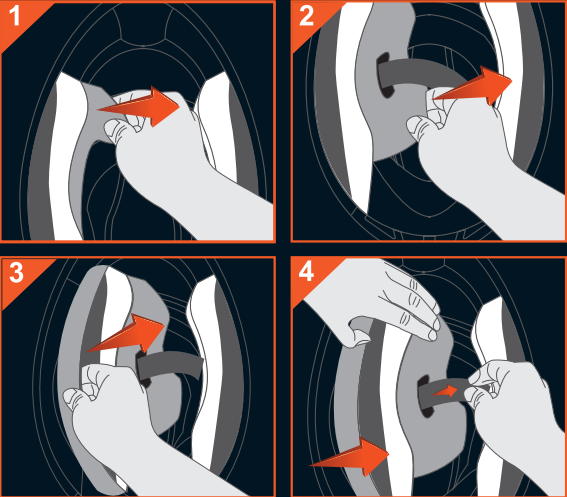
Left cheek pad

Chin curtain

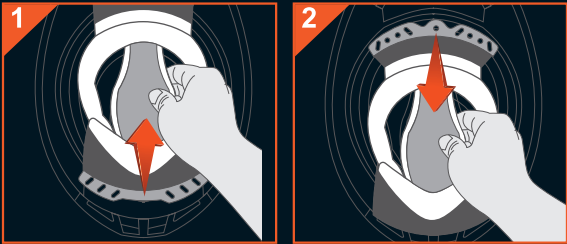
REMOVABLE

The crown padding, left/right cheek pads and chin curtain are removable and washable. To disassemble and assemble the inner liner, please see the instructions and the figure below.

CHEEK PADS



CROWN PADDING



WASHABLE

CLEANING

Apply soft cleaning soap with room temperature water, then dip the whole set of liners into the water for 5-10 mins. Squeeze the liners a few times to let water soak into the sponge.



DRYING

Let the liners dry away from direct sunlight to avoid damage from UV light. For fast drying, use a hair dryer, but make sure the air temperature is not over 40 degrees Celsius to avoid damage that could affect the protective properties of the liner material.



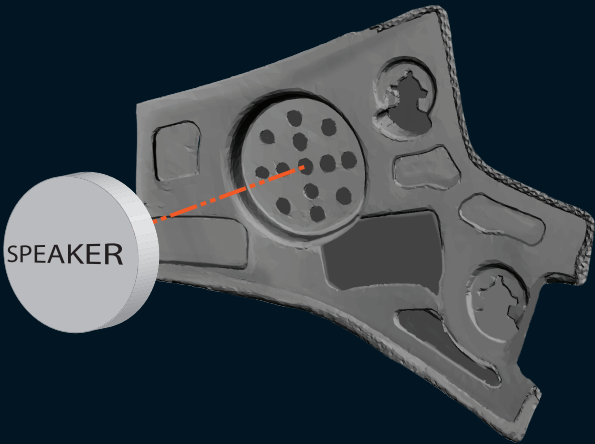
Avoid sunlight



HEADSET

SPEAKER INSERT

Your helmet is ready for speaker installation. There is a 5 cm diameter cavity in each cheek pad for inserting stereo speakers.



MORE FEATURES

Get maximum benefits from your helmet with this information.

MATERIALS	Shell materials	Shock resistant thermoplastic (SRT)	
	Cushion materials	Expanded polystyrene (EPS)	
	Interior liners	Active Air	
	Sun visor	Polycarbonate	
SYSTEM	Type of retension system	Stepping lock	
	Type of cushion structure	Multi density	
	Removable interior	Available	
GENERAL	Standard certificated	ECE R22.05	TIS 369-2557

NOTES

SIZES

6 IMPACT LINER SIZES

SIZING	Number of shell sizes	Two shell sizes					
	Interior circumference (cm.)	53-54	55-56	57-58	59-60	61-62	63-64
	Sizes of shell	M			L		
	Sizes of cushion	S		M	L		
	Sizes of interior liners	XS	S	M	L	XL	XXL

MEASURE YOUR

Interior Circumference (cm)

CM

53 - 54

55 - 56

57 - 58

59 - 60

61 - 62

63 - 64

WHAT SIZE DO YOU NEED?