

KNOW YOUR HELMET

ENGLISH

INSTRUCTIONS

VELOCE



EXTERIOR

OUTER SHELL IMPACT PROTECTION

TESTING POINTS

S
B
P
R
X



SRT

Shock Resistant Thermoplastic is a strong material known as PC/ABS which resists high impacts. The outer layer of the helmet is formed by the injection of molten plastic into a specially engineered mold to produce the strongest possible shell.

EPS

Expanded Polystyrene absorbs shocks from high impacts in order to reduce serious injuries.

1 SHELL SIZE

L



SHELL SIZES

L

LINER SIZES

XS / S / M / L / XL / XXL / XXXL

BILMOLA

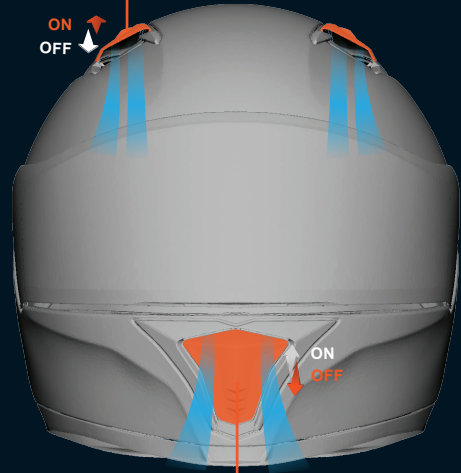
www.bilmola.com

VENTILATION

TOP

The top intake draws a high volume of air to your head to keep you cool and dry.

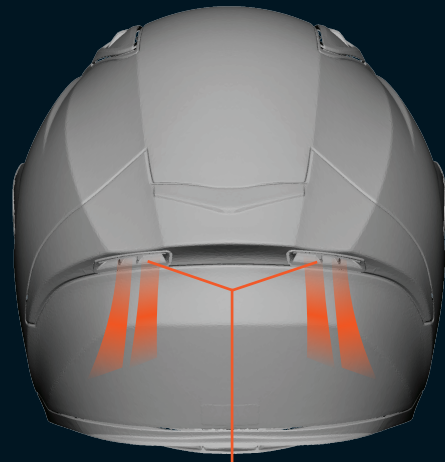
ON
OFF



FRONT

When open, the front vent increases the flow of fresh, breathable air and reduces fogging.

ON
OFF



EXHAUST

The exhaust efficiently draws out hot air from the inside of the helmet.

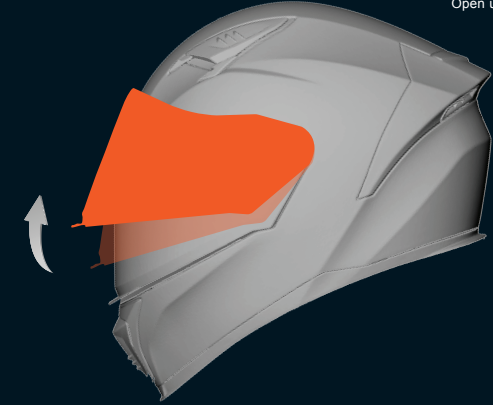
VISION SHIELD

VISOR

REMOVAL

STEP 1

Open up visor.



STEP 2

Pull the latch down and lift the visor out from mechanism.

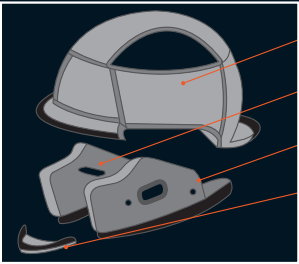


INTERIOR

REMOVABLE

LINER SET

ASSEMBLE



Crown padding

Right cheek pad

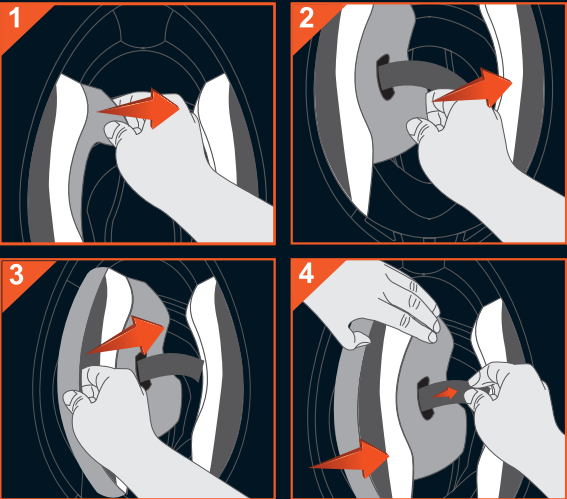
Left cheek pad

Chin curtain

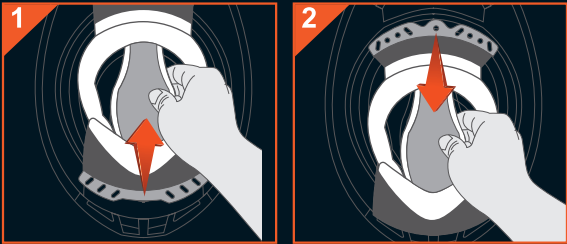
REMOVABLE

The crown padding, left/right cheek pads and chin curtain are removable and washable. To disassemble and assemble the inner liner, please see the instructions and the figure below.

CHEEK PADS



CROWN PADDING



WASHABLE

CLEANING

Apply soft cleaning soap with room temperature water, then dip the whole set of liners into the water for 5-10 mins. Squeeze the liners a few times to let water soak into the sponge.



DRYING

Let the liners dry away from direct sunlight to avoid damage from UV light. For fast drying, use a hair dryer, but make sure the air temperature is not over 40 degrees Celsius to avoid damage that could affect the protective properties of the liner material.



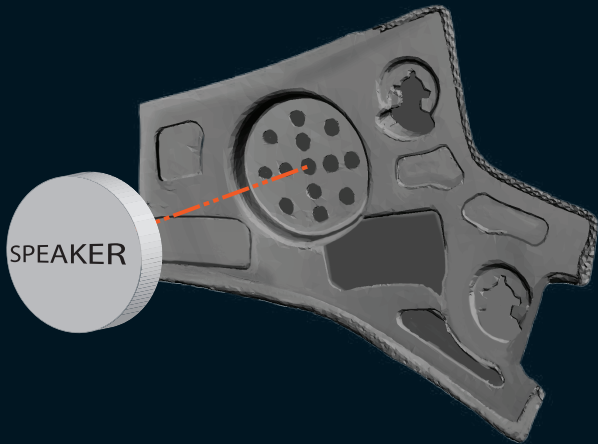
Avoid sunlight



HEADSET

SPEAKER INSERT

Your helmet is ready for speaker installation. There is a 5 cm diameter cavity in each cheek pad for inserting stereo speakers.



MORE FEATURES

Get maximum benefits from your helmet with this information.

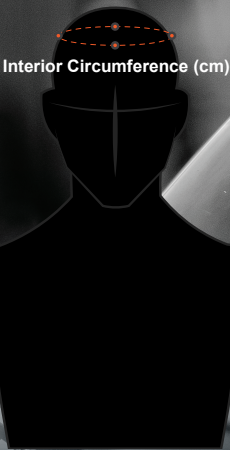
MATERIALS	Shell materials	Shock resistant thermoplastic (SRT)
	Cushion materials	Expanded polystyrene (EPS)
	Interior liners	Active Air
	Sun visor	Polycarbonate
SYSTEM	Type of retension system	Stepping lock
	Type of cushion structure	Multi density
	Removable interior	Available
	Weights	1400±50 g
GENERAL	Standard certificated	ECE R22.05 and TIS 369-2557

SIZES

6 IMPACT LINER SIZES

SIZING	Number of shell sizes	One shell size						
	Interior circumference (cm.)	53-54	55-56	57-58	59-60	61-62	63-64	65-66
	Sizes of shell	L						
	Sizes of cushion	S		M	L			
	Sizes of interior liners	XS	S	M	L	XL	XXL	XXXL

MEASURE YOUR



CM

53 - 54
55 - 56
57 - 58
59 - 60
61 - 62
63 - 64
65 - 66

WHAT SIZE DO YOU NEED?